

02 August 2018

Dear Sir/Madam

M1 Junction 13 to 16 Smart Motorway Programme

I am writing to update you on the above scheme.

We will be carrying out overnight closures to install temporary traffic management in the form of 3 narrow running lanes between junctions 13 and 15. This will involve the removal of the existing road markings, installation of temporary signs, temporary road markings and temporary steel traffic barriers along the central reserve.

Safety is our number one priority and for this reason, work of this type must be carried out using a full carriageway closure.

Therefore, as part of these works we will be carrying out overnight closures as detailed in the schedule on Page 2. Please note these are provisional dates, and are subject to change. We will update our website accordingly with any changes, which can be accessed at:

<https://highwaysengland.co.uk/projects/m1-junction-13-to-junction-16-smart-motorway/>

Drivers are asked to follow the signed diversion routes during these closures. Please do not use satellite navigation (sat nav) when following the diversion.

We advise local residents and business owners to ensure they allow extra time to complete their journeys. We will do our utmost to complete the work as quickly as possible and keep noise and disruption to a minimum. However, we acknowledge some operations may cause noise, for example reversing beepers which have to be operational on our vehicles for health and safety reasons.

I hope this information is helpful and we apologise in advance for any inconvenience these essential works may cause. However, if you have any additional questions or concerns please contact Highways England Customer Contact Centre on 0300 123 5000 or info@highwaysengland.co.uk.

Yours sincerely

Amie Wildman
Community Relations Officer
Working for and on behalf of Highways England

Costain Galliford Try SM Joint Venture

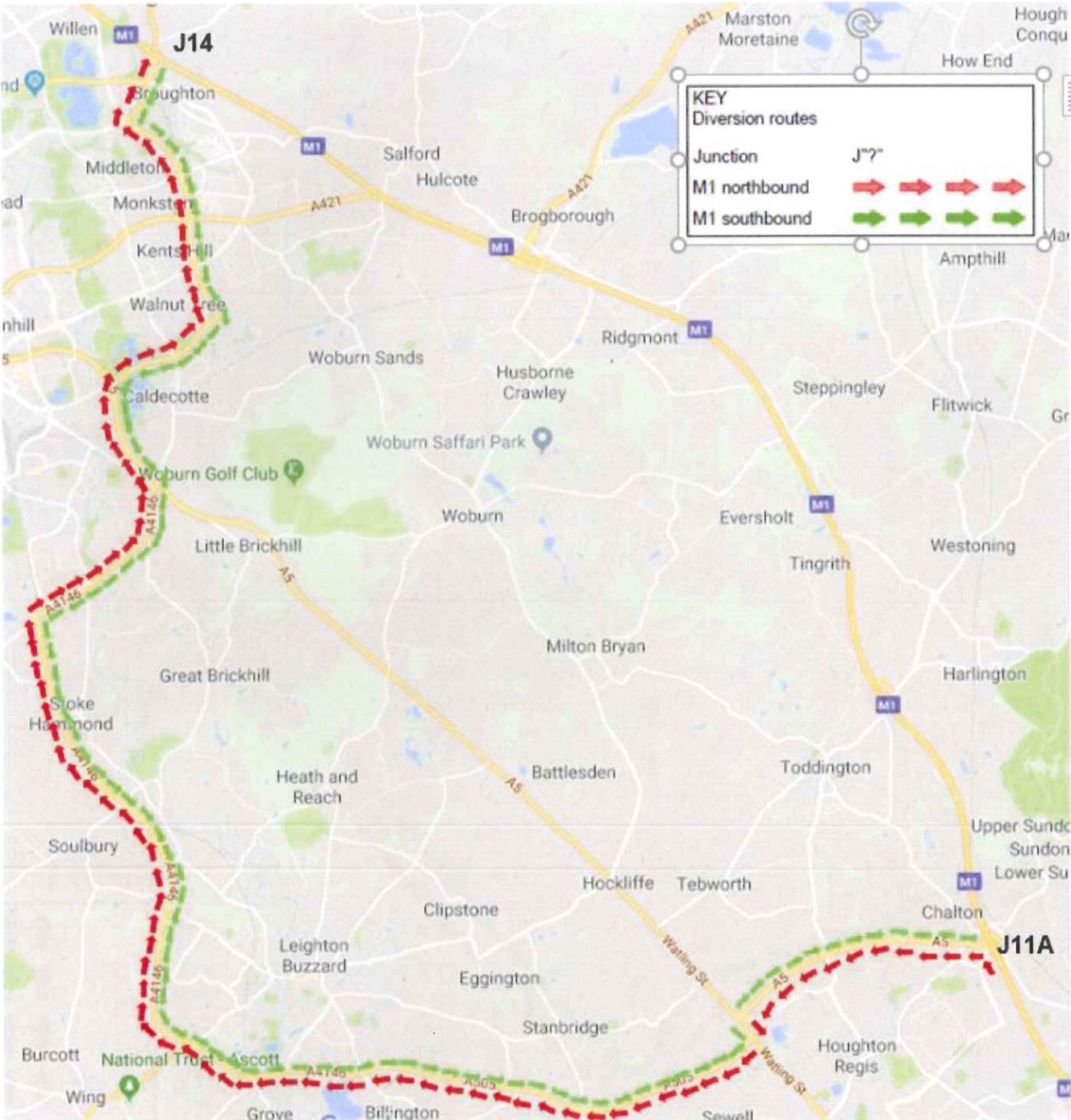
Schedule for M1 overnight closures

Works are weather-dependant and may have to be cancelled at short notice. Diversion timings are approximate and act as a guideline only; please check Traffic England (www.trafficengland.co.uk) for current traffic conditions.

Closure Information			
Date	Duration	Details	Allow Extra
8 August for 3 nights only	9pm – 6am	Full closure of M1 junction 11A to 14 Northbound	40 mins
11 August for 3 nights only	9pm – 6am	Full closure of M1 junction 14 to 11A Southbound	40 mins
31 August for 3 nights only	9pm – 6am	Full closure of M1 junction 14 to 15 Northbound	15 mins
02 September for 4 nights only	9pm – 6am	Full closure of M1 junction 15 to 14 Southbound	15 mins
19 September for 3 nights only	9pm – 6am	Full closure of M1 junction 14 to 15 Northbound	15 mins
21 September for 4 nights only	9pm – 6am	Full closure of M1 junction 15 to 14 Southbound	15 mins
03 October for 3 nights only	9pm – 6am	Full closure of M1 junction 14 to 15 Northbound	15 mins
06 October for 4 nights only	9pm – 6am	Full closure of M1 junction 15 to 14 Southbound	15 mins
17 October for 3 nights only	9pm – 6am	Full closure of M1 junction 14 to 15 Northbound	15 mins
19 October for 4 nights only	9pm – 6am	Full closure of M1 junction 15 to 14 Southbound	15 mins

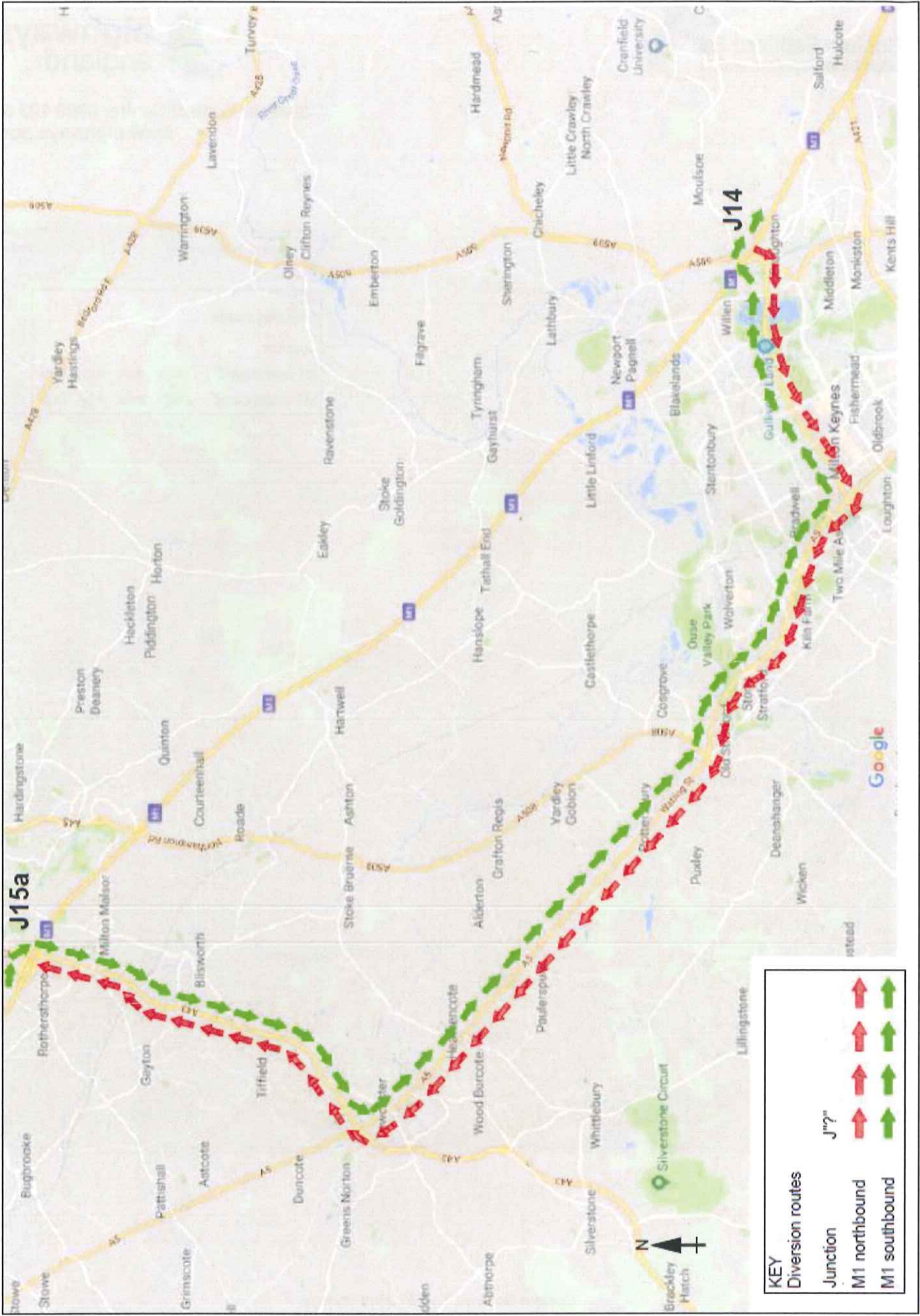


Customer Contact Centre: 0300 123 5000
www.highways.gov.uk



Costain Galliford Try SM Joint Venture

Site Compound, VOSA layby, off A428 Rugby Road, Crick, Northamptonshire, NN6 7SL
 Email: M1J13-J16CCC@costain.com



KEY	
Diversion routes	
Junction	
M1 northbound	
M1 southbound	